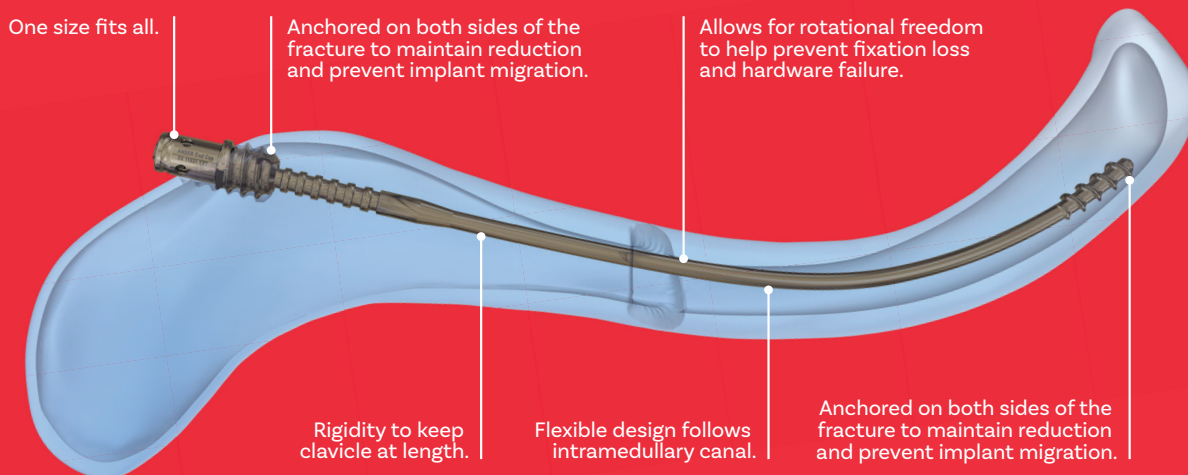




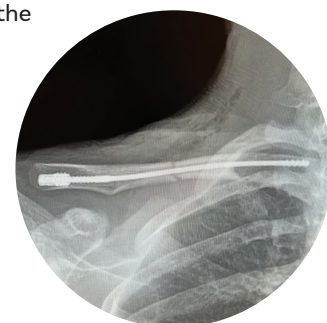
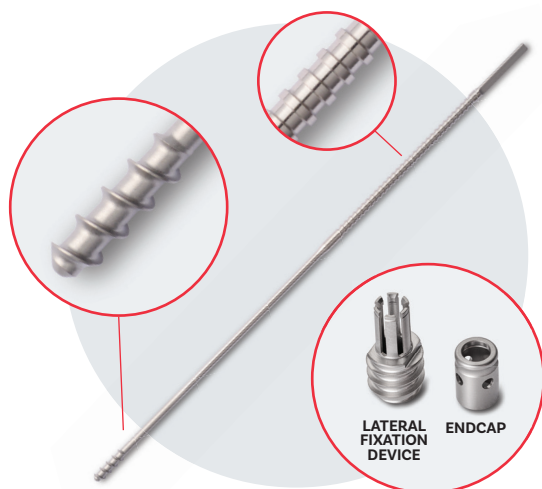
INTRODUCING THE ANSER CLAVICLE PIN



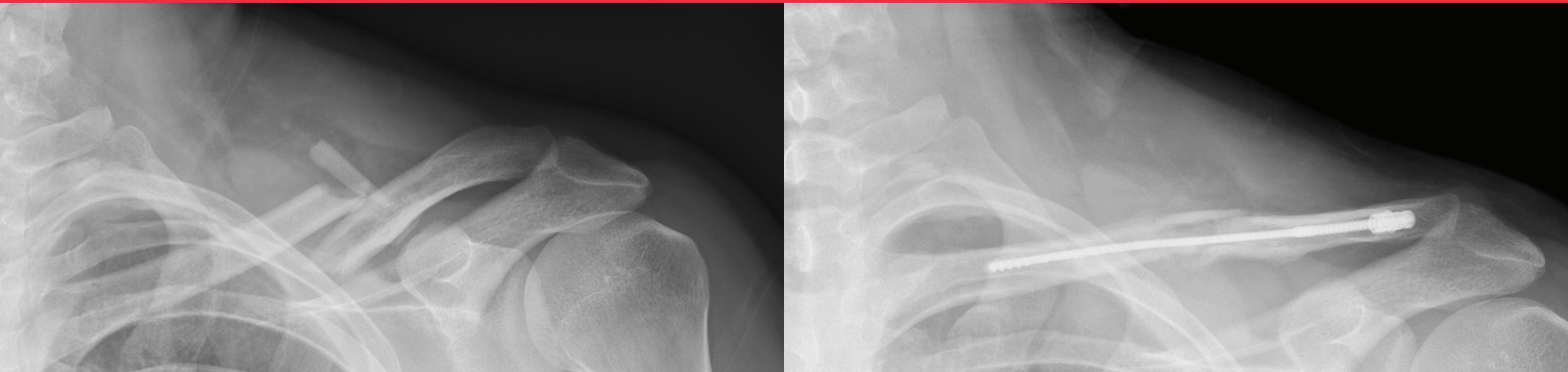
MINIMALLY INVASIVE. OPTIMALLY EFFECTIVE.

The Anser Clavicle Pin was made to solve a problem – the lack of optimal treatment options for midshaft clavicle fractures. For many fractures, nonoperative treatment is inadequate. And the drawbacks with plates can offset their benefits. The Anser Pin offers the solution:

- Minimally invasive intramedullary design
- Stabilizes the bone while accommodating micromotion and preserving length
- Allows patients to return to normal activities quickly, without compromised motion
- No disfiguring bumps or scars



FIXATION THAT'S OPTIMAL FOR THE CLAVICLE



The Anser Clavicle Pin is designed specifically for the treatment of midshaft clavicle fractures. It allows for intramedullary alignment with a flexible design that follows the curvature of the clavicle, providing stability while accommodating micromotion. This allows the bone to heal at length, making faster recovery and better long-term outcomes possible.

PLATES

- Large incision
- Infection risk
- Prominent scarring
- Sensory nerve damage
- Frequent need for secondary interventions
- Risk of refracture after removal

LEGACY INTRAMEDULLARY DEVICES

- Prominent, protruding hardware
- Telescoping, migration
- Wound breakdown
- Frequent need for secondary interventions
- Indicated for small subset of fractures

ANSER CLAVICLE PIN

- One size fits all
- Minimally invasive
- Quick and simple procedure
- FDA approved for all midshaft fractures
- Reduced need for hardware removal

ORDER INFO

To order, go to www.anserimplants.com



INSTRUMENT SET

1. Pointed 4.0 mm Entry Drill Bit
2. Anser Clavicle Pin Tissue Protector
3. Anser Clavicle Pin Manual Pin Driver
4. Anser Clavicle Pin Cannulated Tap
5. Anser Clavicle Pin Lateral Fixation Device Inserter
6. Anser Clavicle Pin Endcap Inserter



© 2023 Anser Implants. All Rights Reserved. ANS2023001V1

Anser Implants
7625 Golden Triangle Dr.
Suite G
Eden Prairie, MN 55344 USA
+1 651-321-1892

info@anserimplants.com
www.anserimplants.com

